



Двигатели для газонокосилок и культиваторов серии E, EX

По вопросам продаж и поддержки обращайтесь:

Архангельск (8182)63-90-72,
Астана+7(7172)727-132,
Белгород(4722)40-23-64,
Брянск(4832)59-03-52,
Владивосток(423)249-28-31,
Волгоград(844)278-03-48,
Вологда(8172)26-41-59,
Воронеж(473)204-51-73,
Екатеринбург(343)384-55-89,
Иваново(4932)77-34-06,
Ижевск(3412)26-03-58,
Казань(843)206-01-48,
Калининград(4012)72-03-81,
Калуга(4842)92-23-67,
Кемерово(3842)65-04-62,
Киров(8332)68-02-04,

Краснодар(861)203-40-90,
Красноярск(391)204-63-61,
Курск(4712)77-13-04,
Липецк(4742)52-20-81,
Магнитогорск(3519)55-03-13,
Москва(495)268-04-70,
Мурманск(8152)59-64-93,
Набережные Челны(8552)20-53-41,
Нижний Новгород(831)429-08-12,
Новокузнецк(3843)20-46-81,
Новосибирск(383)227-86-73,
Орел(4862)44-53-42,
Оренбург(3532)37-68-04,
Пенза(8412)22-31-16,
Пермь(342)205-81-47,
Ростов-на-Дону(863)308-18-15,

Рязань(4912)46-61-64,
Самара(846)206-03-16,
Санкт-Петербург(812)309-46-40,
Саратов(845)249-38-78,
Смоленск(4812)29-41-54,
Сочи(862)225-72-31,
Ставрополь(8652)20-65-13,
Тверь(4822)63-31-35,
Томск(3822)98-41-53,
Тула(4872)74-02-29,
Тюмень(3452)66-21-18,
Ульяновск(8422)24-23-59,
Уфа(347)229-48-12,
Челябинск(351)202-03-61,
Череповец(8202)49-02-64,
Ярославль(4852)69-52-93



SMALL VERTICAL

Small vertical engines from Briggs & Stratton® power millions of walk behind lawn mowers worldwide. Reliable and easy to use, Briggs & Stratton's small vertical engines come in 5 different engine Series.

These Series engines help you to better position your original power equipment offerings to succeed with the right combination of value, performance, technology and power every day.

ENTRY

STANDARD

PERFORMANCE

PREMIUM

COMMERCIAL

SMALL VERTICAL 450 SERIES™



ENTRY

STANDARD

PERFORMANCE

PREMIUM

COMMERCIAL

Engine type	Single cylinder, 4-stroke, air-cooled
Model Number	09T5
Gross Torque (Nm) @ 3'060 rpm	6,1 *
Displacement (cc)	148
Cylinder	Aluminium
Bore & Stroke (mm)	65,1 x 44,5
Fuel tank capacity (l)	0,8
Oil capacity (l)	0,6
Dry weight (kg)	9,0
Dimensions L x W x H (mm)	324 x 294 x 242
Features	–
Optional	–
Cover options	see page 72

Load:	Fuel Consumption in Litres per Hour**			
	Full	75%	50%	25%
Litres:	1,09	0,90	0,71	0,55

* Power levels are stated gross torque per SAE J1940 as rated by Briggs & Stratton.

** (Load @ 3'600 rpm). Fuel consumption is depending on engine configuration, application and operating conditions.

SMALL VERTICAL 500 SERIES™



ENTRY

STANDARD

PERFORMANCE

PREMIUM

COMMERCIAL

Engine type	Single cylinder, 4-stroke, air-cooled
Model Number	10T5 / 10T6
Gross Torque (Nm) @ 3'060 rpm	6,8*
Displacement (cc)	158
Cylinder	Aluminium
Bore & Stroke (mm)	65,1 x 47,7
Fuel tank capacity (l)	0,8
Oil capacity (l)	0,6
Dry weight (kg)	9,0
Dimensions L x W x H (mm)	324 x 294 x 242
Features	Mechanical governor (10T6 only)
Optional	-
Cover options	see page 72

Load:	Fuel Consumption in Litres per Hour**			
	Full	75%	50%	25%
Litres:	1,09	0,90	0,71	0,55

* Power levels are stated gross torque per SAE J1940 as rated by Briggs & Stratton.

** (Load @ 3'600 rpm). Fuel consumption is depending on engine configuration, application and operating conditions.

SMALL VERTICAL 500E SERIES™



ENTRY

STANDARD

PERFORMANCE

PREMIUM

COMMERCIAL

Engine type	Single cylinder, 4-stroke, air-cooled, OHV
Model Number	09P6
Gross Torque (Nm) @ 3'060 rpm	6.8*
Displacement (cc)	140
Cylinder	Aluminium
Bore & Stroke (mm)	63,4 x 44,45
Fuel tank capacity (l)	0,8
Oil capacity (l)	0,47
Dry weight (kg)	8,2
Dimensions L x W x H (mm)	347 x 305 x 242
Features	Mechanical governor
Optional	-

Load:	Fuel Consumption in Litres per Hour**			
	Full	75%	50%	25%
Litres:	Tbc	Tbc	Tbc	Tbc

* Power levels are stated gross torque per SAE J1940 as rated by Briggs & Stratton.
** (Load @ 3'600 rpm). Fuel consumption is depending on engine configuration,
application and operating conditions.

SMALL VERTICAL 550 SERIES™



ENTRY

STANDARD

PERFORMANCE

PREMIUM

COMMERCIAL

Engine type	Single cylinder, 4-stroke, air-cooled
Model Number	10T8
Gross Torque (Nm) @ 3'060 rpm	7,5*
Displacement (cc)	158
Cylinder	Aluminium
Bore & Stroke (mm)	65,1 x 47,7
Fuel tank capacity (l)	0,8
Oil capacity (l)	0,6
Dry weight (kg)	9,0
Dimensions L x W x H (mm)	324 x 294 x 242
Features	Mechanical governor
Optional	-
Cover options	see page 72

Load:	Fuel Consumption in Litres per Hour**			
	Full	75%	50%	25%
Litres:	1,09	0,90	0,71	0,55

* Power levels are stated gross torque per SAE J1940 as rated by Briggs & Stratton.

** (Load @ 3'600 rpm). Fuel consumption is depending on engine configuration, application and operating conditions.

SMALL VERTICAL 550E SERIES™



ENTRY

STANDARD

PERFORMANCE

PREMIUM

COMMERCIAL

Engine type	Single cylinder, 4-stroke, air-cooled, OHV
Model Number	09P7
<hr/>	
Gross Torque (Nm) @ 3'060 rpm	7,5*
Displacement (cc)	140
Cylinder	Aluminium
Bore & Stroke (mm)	63,4 x 44,45
Fuel tank capacity (l)	0,8
Oil capacity (l)	0,47
Dry weight (kg)	8,2
Dimensions L x W x H (mm)	347 x 305 x 242
Features	Mechanical governor Paper air-filter
Optional	Super Lo-Tone™ Muffler

Load:	Fuel Consumption in Litres per Hour**			
	Full	75%	50%	25%
Litres:	Tbc	Tbc	Tbc	Tbc

* Power levels are stated gross torque per SAE J1940 as rated by Briggs & Stratton.
 ** (Load @ 3'600 rpm). Fuel consumption is depending on engine configuration,
 application and operating conditions.

SMALL VERTICAL 575EX SERIES™



ENTRY

STANDARD

PERFORMANCE

PREMIUM

COMMERCIAL

Engine type	Single cylinder, 4-stroke, air-cooled, OHV
Model Number	09P7
Gross Torque (Nm) @ 3'060 rpm	7,5*
Displacement (cc)	140
Cylinder	Aluminium
Bore & Stroke (mm)	63,4 x 44,45
Fuel tank capacity (l)	0,8
Oil capacity (l)	0,47
Dry weight (kg)	8,2
Dimensions L x W x H (mm)	347 x 305 x 242
Features	Mechanical governor ReadyStart®, S2, Paper air-filter
Optional	-

Fuel Consumption in Litres per Hour**

Load:	Full	75%	50%	25%
Litres:	Tbc	Tbc	Tbc	Tbc

* Power levels are stated gross torque per SAE J1940 as rated by Briggs & Stratton.

** (Load @ 3'600 rpm). Fuel consumption is depending on engine configuration, application and operating conditions.

SMALL VERTICAL 625E SERIES™



ENTRY

STANDARD

PERFORMANCE

PREMIUM

COMMERCIAL

Engine type	Single cylinder, 4-stroke, air-cooled
Model Number	122T
Gross Torque (Nm) @ 3'060 rpm	8,5*
Displacement (cc)	190
Cylinder	Aluminium
Bore & Stroke (mm)	68,3 x 51,8
Fuel tank capacity (l)	1,0
Oil capacity (l)	0,6
Dry weight (kg)	10,9
Dimensions L x W x H (mm)	351 x 308 x 249
Features	–
Optional	Electric Start
Cover options	see page 73

Load:	Fuel Consumption in Litres per Hour**			
	Full	75%	50%	25%
Litres:	1,55	1,27	0,96	0,70

* Power levels are stated gross torque per SAE J1940 as rated by Briggs & Stratton.

** (Load @ 3'600 rpm). Fuel consumption is depending on engine configuration, application and operating conditions.

SMALL VERTICAL 650E SERIES™



ENTRY

STANDARD

PERFORMANCE

PREMIUM

COMMERCIAL

Engine type	Single cylinder, 4-stroke, air-cooled
Model Number	124T
Gross Torque (Nm) @ 3'060 rpm	8,8*
Displacement (cc)	190
Cylinder	Aluminium
Bore & Stroke (mm)	68,3 x 51,8
Fuel tank capacity (l)	1,0
Oil capacity (l)	0,6
Dry weight (kg)	10,9
Dimensions L x W x H (mm)	351 x 308 x 249
Features	ReadyStart®, S2
Optional	Electric Start
Cover options	see page 73

Load:	Fuel Consumption in Litres per Hour**			
	Full	75%	50%	25%
Litres:	1,55	1,27	0,96	0,70

* Power levels are stated gross torque per SAE J1940 as rated by Briggs & Stratton.

** (Load @ 3'600 rpm). Fuel consumption is depending on engine configuration, application and operating conditions.

SMALL VERTICAL 675EX SERIES™



ENTRY

STANDARD

PERFORMANCE

PREMIUM

COMMERCIAL

Engine type	Single cylinder, 4-stroke, air-cooled
Model Number	126T
Gross Torque (Nm) @ 3'060 rpm	9,2*
Displacement (cc)	190
Cylinder	Aluminium
Bore & Stroke (mm)	68,3 x 51,8
Fuel tank capacity (l)	1,0
Oil capacity (l)	0,6
Dry weight (kg)	10,9
Dimensions L x W x H (mm)	351 x 308 x 249
Features	ReadyStart®, S2
Optional	Electric Start
Cover options	see page 73

Load:	Fuel Consumption in Litres per Hour**			
	Full	75%	50%	25%
Litres:	1,55	1,27	0,96	0,70

* Power levels are stated gross torque per SAE J1940 as rated by Briggs & Stratton.

** (Load @ 3'600 rpm). Fuel consumption is depending on engine configuration, application and operating conditions.

SMALL VERTICAL 700E SERIES™ DOV®



ENTRY

STANDARD

PERFORMANCE

PREMIUM

COMMERCIAL

Engine type	Single cylinder 4-stroke, air-cooled, DOV® (Direct Overhead Valve)
Model Number	0906
Gross Torque (Nm) @ 3'060 rpm	7,5*
Displacement (cc)	140
Cylinder	Aluminium
Bore & Stroke (mm)	59,7 x 50,0
Fuel tank capacity (l)	1,0
Oil capacity (l)	0,6
Dry weight (kg)	11,1
Dimensions L x W x H (mm)	369 x 320 x 254
Features	ReadyStart®, S2
Optional	Electric Start

Load:	Fuel Consumption in Litres per Hour**			
	Full	75%	50%	25%
Litres:	1,28	1,09	0,83	0,60

* Power levels are stated gross torque per SAE J1940 as rated by Briggs & Stratton.

** (Load @ 3'600 rpm). Fuel consumption is depending on engine configuration, application and operating conditions.

SMALL VERTICAL 750EX SERIES™ DOV®



ENTRY

STANDARD

PERFORMANCE

PREMIUM

COMMERCIAL

Engine type	Single cylinder, 4-stroke, air-cooled, DOV® (Direct Overhead Valve)
Model Number	1006
Gross Torque (Nm) @ 3'060 rpm	9,5*
Displacement (cc)	161
Cylinder	Aluminium
Bore & Stroke (mm)	64,0 x 50,0
Fuel tank capacity (l)	1,0
Oil capacity (l)	0,6
Dry weight (kg)	11,1
Dimensions L x W x H (mm)	369 x 325 x 254
Features	ReadyStart®, S2
Optional	Electric Start

Load:	Fuel Consumption in Litres per Hour**			
	Full	75%	50%	25%
Litres:	1,28	1,09	0,83	0,60

* Power levels are stated gross torque per SAE J1940 as rated by Briggs & Stratton.
 ** (Load @ 3'600 rpm). Fuel consumption is depending on engine configuration, application and operating conditions.

SMALL VERTICAL 750EX SERIES™ I/C® DOV®



Engine type Single cylinder,
4-stroke, air-cooled,
DOV® (Direct Overhead Valve)

Model Number **1008**

Gross Torque (Nm) **9,5***
@ 3'060 rpm

Displacement (cc) 161

Cylinder **Cast Iron Sleeve**

Bore & Stroke (mm) 64,0 x 50,0

Fuel tank capacity (l) 1,0

Oil capacity (l) 0,6

Dry weight (kg) 11,1

Dimensions 369 x 325 x 254
L x W x H (mm)

Features ReadyStart®, S2

Optional Electric Start

Load:	Fuel Consumption in Litres per Hour**			
	Full	75%	50%	25%
Litres:	1,28	1,09	0,83	0,60

* Power levels are stated gross torque per SAE J1940 as rated by Briggs & Stratton.

** (Load @ 3'600 rpm). Fuel consumption is depending on engine configuration, application and operating conditions.

SMALL VERTICAL 800E SERIES™



ENTRY

STANDARD

PERFORMANCE

PREMIUM

COMMERCIAL

Engine type

Single cylinder
4-stroke, air-cooled,
OHV (Overhead Valve)

Model Number

112P

Gross Torque (Nm)
@ 3'060 rpm

10,5*

Displacement (cc)

175

Cylinder

Aluminium

Bore & Stroke (mm)

65,6 x 51,8

Fuel tank capacity (l)

1,1

Oil capacity (l)

0,7

Dry weight (kg)

11,2

Dimensions
L x W x H (mm)

397 x 326 x 238

Features

ReadyStart®, S2

Optional

Electric Start, Oil Filter

Load:	Fuel Consumption in Litres per Hour**			
	Full	75%	50%	25%
Litres:	1,7	1,4	1,0	0,8

* Power levels are stated gross torque per SAE J1940 as rated by Briggs & Stratton.

** (Load @ 3'600 rpm). Fuel consumption is depending on engine configuration, application and operating conditions.

SMALL VERTICAL 850E SERIES™



ENTRY

STANDARD

PERFORMANCE

PREMIUM

COMMERCIAL

Engine type

Single cylinder,
4-stroke, air-cooled,
OHV (Overhead Valve)

Model Number

122R

Gross Torque (Nm)
@ 3'060 rpm

11,5*

Displacement (cc)

190

Cylinder

Aluminium

Bore & Stroke (mm)

68,3 x 51,8

Fuel tank capacity (l)

1,1

Oil capacity (l)

0.7

Dry weight (kg)

11,2

Dimensions
L x W x H (mm)

397 x 326 x 238

Features

ReadyStart®, S2

Optional

Electric Start, Oil Filter

Fuel Consumption in Litres per Hour**

Load:	Full	75%	50%	25%
Litres:	1,7	1,4	1,0	0,8

* Power levels are stated gross torque per SAE J1940 as rated by Briggs & Stratton.

** (Load @ 3'600 rpm). Fuel consumption is depending on engine configuration, application and operating conditions.

SMALL VERTICAL 850E SERIES™ I/C®



ENTRY

STANDARD

PERFORMANCE

PREMIUM

COMMERCIAL

Engine type

Single cylinder,
4-stroke, air-cooled,
OHV (Overhead Valve)

Model Number

122Q

Gross Torque (Nm)
@ 3'060 rpm

11,5*

Displacement (cc)

190

Cylinder

Cast Iron Sleeve

Bore & Stroke (mm)

68,3 x 51,8

Fuel tank capacity (l)

1,1

Oil capacity (l)

0,7

Dry weight (kg)

11,2

Dimensions
L x W x H (mm)

397 x 326 x 238

Features

ReadyStart®, S2,
Dual element air cleaners

Optional

Electric Start, Oil Filter

Load:	Fuel Consumption in Litres per Hour**			
	Full	75%	50%	25%
Litres:	1,7	1,4	1,0	0,8

* Power levels are stated gross torque per SAE J1940 as rated by Briggs & Stratton.

** (Load @ 3'600 rpm). Fuel consumption is depending on engine configuration, application and operating conditions.

SMALL VERTICAL 875EX SERIES™



ENTRY

STANDARD

PERFORMANCE

PREMIUM

COMMERCIAL

Engine type	Single cylinder, 4-stroke, air-cooled, OHV (Overhead Valve)
Model Number	122S
Gross Torque (Nm) @ 3'060 rpm	11,9*
Displacement (cc)	190
Cylinder	Aluminium
Bore & Stroke (mm)	68,3 x 51,8
Fuel tank capacity (l)	1,1
Oil capacity (l)	0,7
Dry weight (kg)	11,2
Dimensions L x W x H (mm)	397 x 326 x 238
Features	ReadyStart®, S2
Optional	Electric Start, Oil Filter

Load:	Fuel Consumption in Litres per Hour**			
	Full	75%	50%	25%
Litres:	1,7	1,4	1,0	0,8

* Power levels are stated gross torque per SAE J1940 as rated by Briggs & Stratton.

** (Load @ 3'600 rpm). Fuel consumption is depending on engine configuration, application and operating conditions.

SMALL VERTICAL 950E SERIES™



ENTRY

STANDARD

PERFORMANCE

PREMIUM

COMMERCIAL

Engine type

Single cylinder,
4-stroke, air-cooled,
OHV (Overhead Valve)

Model Number

14B9

Gross Torque (Nm)
@ 3'060 rpm

12,88*

Displacement (cc)

223

Cylinder

Aluminium

Bore & Stroke (mm)

74 x 51,3

Fuel tank capacity (l)

1,1

Oil capacity (l)

0,7

Dry weight (kg)

14,2

Dimensions
L x W x H (mm)

401 x 339 x 257

Features

Super Lo-Tone™ Muffler,
ReadyStart®, S2,
Paper air-filter,
0,5 Amp Alternator

Optional

-

Fuel Consumption in Litres per Hour**

Load: Full 75% 50% 25%

Litres: Tbc Tbc Tbc Tbc

* Power levels are stated gross torque per SAE J1940 as rated by Briggs & Stratton.
** (Load @ 3'600 rpm). Fuel consumption is depending on engine configuration,
application and operating conditions.



SMALL VERTICAL EMISSION REDUCED

Because of increasing consumer concern about the environment, Briggs & Stratton offers a range of engines which not only exceed current European exhaust emissions standards (97/68/EC and 2004/26/EC (Stage II)) by 25% but also offer significantly reduced evaporative emissions.

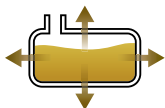


Engine Emissions

Briggs & Stratton has a long-standing commitment to protect the environment and through continuous R&D investments in advanced technology, has reduced the emissions produced by its engines by up to 75% since 1995.

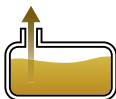
With the introduction of ECO PLUS™ emissions reducing engines in 2009, it further demonstrates Briggs & Stratton's commitment to reduce engine emissions.

Evaporative emissions happen in two ways:



Permeation

Permeation emissions are the result of reactive organic gas molecules penetrating through the walls of the fuel system components, e.g. fuel tank walls, fuel lines, gaskets and seals.



Venting

Venting emissions are the result of fuel evaporating. The fuel evaporation will exit the fuel system by way of venting.

SMALL VERTICAL EMISSION REDUCED 550EX SERIES™ ECO PLUS™



ENTRY

STANDARD

PERFORMANCE

PREMIUM

EMISSION REDUCED

Engine type	Single cylinder, 4-stroke, air-cooled, ECO PLUS™ Technology, OHV
Model Number	09P7
Gross Torque (Nm) @ 3'060 rpm	7,5*
Displacement (cc)	140
Cylinder	Aluminium
Bore & Stroke (mm)	63,4 x 44,45
Fuel tank capacity (l)	0,75
Oil capacity (l)	0,47
Dry weight (kg)	8,2
Dimensions L x W x H (mm)	346.5 x 305.2 x 241.9
Features	Mechanical governor ReadyStart®
Optional	-

	Fuel Consumption in Litres per Hour**			
Load:	Full	75%	50%	25%
Litres:	Tbc	Tbc	Tbc	Tbc

* Power levels are stated gross torque per SAE J1940 as rated by Briggs & Stratton.

** (Load @ 3'600 rpm). Fuel consumption is depending on engine configuration, application and operating conditions.

SMALL VERTICAL EMISSION REDUCED 650EX SERIES™ ECO PLUS™



ENTRY

STANDARD

PERFORMANCE

PREMIUM

EMISSION REDUCED

Engine type Single cylinder,
4-stroke, air-cooled,
ECO PLUS™ Technology

Model Number **124L**

Gross Torque (Nm) **8,8***
@ 3'060 rpm

Displacement (cc) 190

Cylinder Aluminium

Bore & Stroke (mm) 68,3 x 51,8

Fuel tank capacity (l) 1,0

Oil capacity (l) 0,6

Dry weight (kg) 10,9

Dimensions 351 x 308 x 249
L x W x H (mm)

Features ReadyStart®, S2

Optional Electric Start

Load:	Fuel Consumption in Litres per Hour**			
	Full	75%	50%	25%
Litres:	1,55	1,27	0,96	0,70

* Power levels are stated gross torque per SAE J1940 as rated by Briggs & Stratton.

** (Load @ 3'600 rpm). Fuel consumption is depending on engine configuration,
application and operating conditions.

SMALL VERTICAL EMISSION REDUCED 750EX SERIES™ ECO PLUS™



Engine type Single cylinder,
4-stroke, air-cooled,
DOV® (Direct Overhead Valve),
ECO PLUS Technology

Model Number 1006

Gross Torque (Nm) 9,5*
@ 3'060 rpm

Displacement (cc) 161

Cylinder Aluminium

Bore & Stroke (mm) 64,0 x 50,0

Fuel tank capacity (l) 1,0

Oil capacity (l) 0,6

Dry weight (kg) 11,1

Dimensions 369 x 325 x 254
L x W x H (mm)

Features ReadyStart®, S2

Optional Electric Start

Load:	Fuel Consumption in Litres per Hour**			
	Full	75%	50%	25%
Litres:	1,28	1,09	0,83	0,60

* Power levels are stated gross torque per SAE J1940 as rated by Briggs & Stratton.

** (Load @ 3'600 rpm). Fuel consumption is depending on engine configuration,
application and operating conditions.

**SMALL VERTICAL EMISSION REDUCED
850EX SERIES™ ECO PLUS™**



ENTRY

STANDARD

PERFORMANCE

PREMIUM

EMISSION REDUCED

Engine type	Single cylinder, 4-stroke, air-cooled, ECO PLUS™ Technology, OHV
Model Number	122R
Gross Torque (Nm) @ 3'060 rpm	11,5*
Displacement (cc)	190
Cylinder	Aluminium
Bore & Stroke (mm)	68,3 x 51,8
Fuel tank capacity (l)	1,1
Oil capacity (l)	0,7
Dry weight (kg)	11,2
Dimensions L x W x H (mm)	397 x 326 x 238
Features	ReadyStart®, S2
Optional	Electric Start, Oil Filter

Load:	Fuel Consumption in Litres per Hour**			
	Full	75%	50%	25%
Litres:	1,7	1,4	1,0	0,8

* Power levels are stated gross torque per SAE J1940 as rated by Briggs & Stratton.
** (Load @ 3'600 rpm). Fuel consumption is depending on engine configuration,
application and operating conditions.



HORIZONTAL

Briggs & Stratton® horizontal engines are tough, reliable and efficient. Feature for feature, they offer you the best value available for the residential and commercial segments you serve. Our horizontal engines can be found in tillers, generators, pressure washers or water pumps all over the world, where they reliably run and help to improve people's lives.

All our Briggs & Stratton Vanguard™ engines deliver the performance and power you need for commercial applications.

HORIZONTAL 550 SERIES™

ENTRY

STANDARD

PERFORMANCE

PREMIUM

COMMERCIAL



Engine type	Single cylinder, 4-stroke, air-cooled, OHV (Overhead Valve)
Model Number	0831
Gross Torque (Nm) @ 3'060 rpm	7,5*
Displacement (cc)	127
Cylinder	Cast Iron Sleeve
Bore & Stroke (mm)	62,0 x 42,0
Fuel tank capacity (l)	1,8
Oil capacity (l)	0,6
Dry weight (kg)	13,0
Dimensions L x W x H (mm)	261 x 347 x 326
Features	-
Optional	-
Cover options	NA

Load:	Fuel Consumption in Litres per Hour**			
	Full	75%	50%	25%
Litres:	1,22	1,03	0,80	0,54

* Power levels are stated gross torque per SAE J1940 as rated by Briggs & Stratton.
** (Load @ 3'600 rpm). Fuel consumption is depending on engine configuration,
application and operating conditions.

HORIZONTAL 750 SERIES™

ENTRY

STANDARD

PERFORMANCE

PREMIUM

COMMERCIAL



Engine type Single cylinder,
4-stroke, air-cooled
OHV (Overhead Valve)

Model Number 1062

Gross Torque (Nm) 9,4*
@ 3'060 rpm

Displacement (cc) 163

Cylinder *Cast Iron Sleeve*

Bore & Stroke (mm) 68,0 x 45,0

Fuel tank capacity (l) 3,2

Oil capacity (l) 0,6

Dry weight (kg) 13,0

Dimensions 258,6 x 370,4 x 334,1
L x W x H (mm)

Features Lo-Tone™ Muffler

Optional -

Fuel Consumption in Litres per Hour* *

Load: Full 75% 50% 25%

Litres: Tbc Tbc Tbc Tbc

* Power levels are stated gross torque per SAE J1940 as rated by Briggs & Stratton.

** (Load @ 3'600 rpm). Fuel consumption is depending on engine configuration,
application and operating conditions.

HORIZONTAL 800 SERIES™



Engine type Single cylinder,
4-stroke, air-cooled,
OHV (Overhead Valve)

Model Number **1263**

Gross Torque (Nm) **10,9***
@ 3'060 rpm

Displacement (cc) 205

Cylinder Aluminium

Bore & Stroke (mm) 68,3 x 55,9

Fuel tank capacity (l) 2,7

Oil capacity (l) 0,6

Dry weight (kg) 15,3

Dimensions 392 x 263 x 385
L x W x H (mm)

Features -

Optional -

Load:	Fuel Consumption in Litres per Hour**			
	Full	75%	50%	25%
Litres:	1,86	1,53	1,20	0,87

* Power levels are stated gross torque per SAE J1940 as rated by Briggs & Stratton.

** (Load @ 3'600 rpm). Fuel consumption is depending on engine configuration,
application and operating conditions.

HORIZONTAL 900 SERIES™

ENTRY

STANDARD

PERFORMANCE

PREMIUM

COMMERCIAL



Engine type Single cylinder,
4-stroke, air-cooled,
OHV (Overhead Valve)

Model Number **1210**

Gross Torque (Nm) **12,2***
@ 3'060 rpm

Displacement (cc) 205

Cylinder Aluminium

Bore & Stroke (mm) 68,3 x 55,9

Fuel tank capacity (l) 2,7

Oil capacity (l) 0,6

Dry weight (kg) 15,3

Dimensions 392 x 263 x 385
L x W x H (mm)

Features -

Optional

Cover options NA

Fuel Consumption in Litres per Hour**

Load:	Full	75%	50%	25%
Litres:	1,86	1,53	1,20	0,87

* Power levels are stated gross torque per SAE J1940 as rated by Briggs & Stratton.

** (Load @ 3'600 rpm). Fuel consumption is depending on engine configuration,
application and operating conditions.

HORIZONTAL 1450 SERIES™

ENTRY

STANDARD

PERFORMANCE

PREMIUM

COMMERCIAL



Engine type	Single cylinder, 4-stroke, air-cooled, OHV (Overhead Valve)
Model Number	2043
Gross Torque (Nm) @ 3'060 rpm	19,7*
Displacement (cc)	305
Cylinder	Aluminium
Bore & Stroke (mm)	79,2 x 61,9
Fuel tank capacity (l)	3,0
Oil capacity (l)	0,8
Dry weight (kg)	23,0
Dimensions L x W x H (mm)	391 x 314 x 417
Features	-
Optional	NA
Cover options	

	Fuel Consumption in Litres per Hour**			
Load:	Full	75%	50%	25%
Litres:	2,92	2,56	1,78	1,26

* Power levels are stated gross torque per SAE J1940 as rated by Briggs & Stratton.
** (Load @ 3'600 rpm). Fuel consumption is depending on engine configuration,
application and operating conditions.



По вопросам продаж и поддержки обращайтесь:

Архангельск (8182)63-90-72,
Астана+7(7172)727-132,
Белгород(4722)40-23-64,
Брянск(4832)59-03-52,
Владивосток(423)249-28-31,
Волгоград(844)278-03-48,
Вологда(8172)26-41-59,
Воронеж(473)204-51-73,
Екатеринбург(343)384-55-89,
Иваново(4932)77-34-06,
Ижевск(3412)26-03-58,
Казань(843)206-01-48,
Калининград(4012)72-03-81,
Калуга(4842)92-23-67,
Кемерово(3842)65-04-62,
Киров(8332)68-02-04,

Краснодар(861)203-40-90,
Красноярск(391)204-63-61,
Курск(4712)77-13-04,
Липецк(4742)52-20-81,
Магнитогорск(3519)55-03-13,
Москва(495)268-04-70,
Мурманск(8152)59-64-93,
Набережные Челны(8552)20-53-41,
Нижний Новгород(831)429-08-12,
Новокузнецк(3843)20-46-81,
Новосибирск(383)227-86-73,
Орел(4862)44-53-42,
Оренбург(3532)37-68-04,
Пенза(8412)22-31-16,
Пермь(342)205-81-47,
Ростов-на-Дону(863)308-18-15,

Рязань(4912)46-61-64,
Самара(846)206-03-16,
Санкт-Петербург(812)309-46-40,
Саратов(845)249-38-78,
Смоленск(4812)29-41-54,
Сочи(862)225-72-31,
Ставрополь(8652)20-65-13,
Тверь(4822)63-31-35,
Томск(3822)98-41-53,
Тула(4872)74-02-29,
Тюмень(3452)66-21-18,
Ульяновск(8422)24-23-59,
Уфа(347)229-48-12,
Челябинск(351)202-03-61,
Череповец(8202)49-02-64,
Ярославль(4852)69-52-93